

# ATELIERS ISA



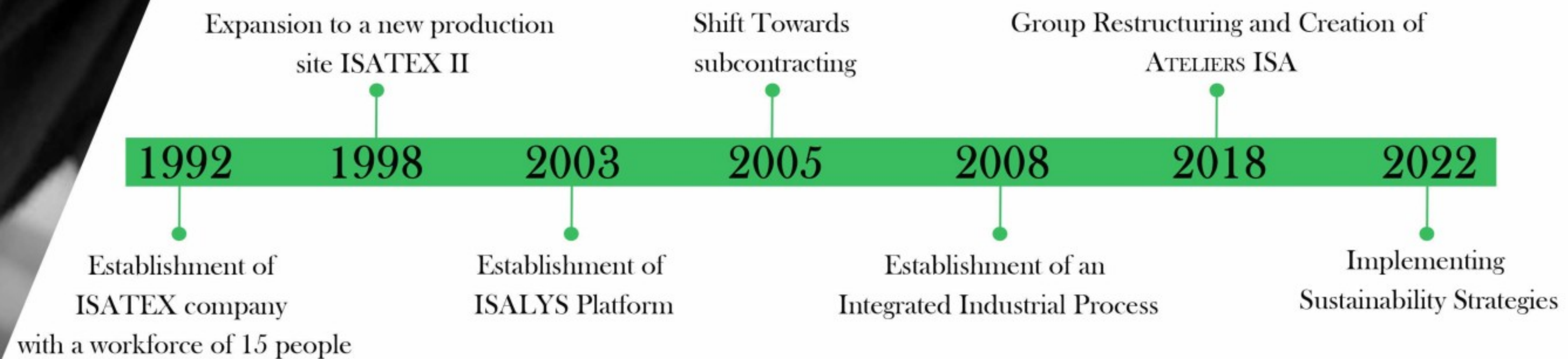
Contact us:  
[www.lesateliersisa.com](http://www.lesateliersisa.com)

# COMPANY OVERVIEW

**Ateliers ISA** is a French public limited company located in Sfax, Tunisia. Specializing in the design, development, and manufacturing of lingerie, swimwear, loungewear, beachwear, sportswear and many other types of articles.

Founded in **1992** by Mr. Michel DESMURS.

The company has since its creation pursued a strategy of transitioning from simple subcontracting to subcontracting and finished products.



# COMPANY OVERVIEW

Over 30 years of expertise in supporting leading lingerie brands.  
Always attentive to the needs of our manufacturers, we have evolved towards the **total integration** of the industrial process.

**Technical mastery, quality compliance, and commitment** to deadlines are all assets that allow you to focus serenely on your creations and your sales networks.

Ateliers ISA are not just production workshops.  
Depending on your needs, you integrate the process at the level that suits you.

**+7 million**

Company turnover ( € )

**+3 million**

Annual Company production

# COMPANY OVERVIEW

Strategically located in the middle of the Mediterranean, we are close to all possible destinations



 ATeliers ISA

 Actual shipment destinations



# PRODUCTS DEVELOPMENT

A development team at your service to meet your needs.

From a sketch, your idea will come to life.

Our professional patternmakers, who are experts in **MODARIS V8 EXPERT**, will create the base pattern.

A team of experienced prototype makers will produce **your first prototype**, which will be sent to you for analysis and feedback.

The development and production of **the size set** will be done in collaboration with your teams.

An experienced methods department will take care of **industrialization** and develop your technical files using **TEXTIVAL** software for time ranges, the OPA Module of **TEXTILYS ERP** for Bill of materials, and **GRAPH G** for drawings.

Meeting your needs is our priority.

Our team is at your disposal for any collaborative technical exchange.

+ 600

Product developed in 2023

+ 95%

Styles selected for production

# RAW MATERIAL MANAGEMENT

Raw materials are stored in our warehouses using barcodes and addressing. Constant and sustainable traceability is fully managed by our ERP.

- Quantitative control and barcode identification upon receipt.
- Management and monitoring of your raw material orders.
- Upon your recommendation, we can purchase your raw materials.
- Our laboratory analyzes the conformity and the quality of your inputs.
- Real-time of consumption monitoring that allows a continuous stock visualization.
- Year-end inventory certified by statutory auditors.

3500m<sup>2</sup>

Warehouse superficicy

+25.000

Material reference managed





# CUTTING DEPARTMENT

Our experienced **CAD** technicians create cutting orders using the **CUT PARTNER** module of our **TEXTILYS ERP**, **MODARIS V8**, and **DIAMINO V6R2** to fulfill your manufacturing orders.

Our primary goals are material optimization through the excellent efficiency of our layouts and meeting deadlines. Our cutting room is equipped with four layering carts and two highly efficient and precise **LECTRA IX** lingerie cutters. The **SVMAT**, **EDITPAQ**, and **LIDO** modules of our ERP allow us to maintain precise and long-lasting traceability from launch to shipment.

The automatic generation of cutting reports provided to the client enables us to analyze and monitor consumption with the aim of optimization. The cutting room is equipped with new equipment to meet all your cutting needs. At the forefront of technology, we have invested in **ultrasonic cutting**, **laser cutting**, and more.

**+15.000**  
Garmen cutted by day

# PRODUCTION DEPARTMENT

Ateliers ISA platform supports both the **upstream** and **downstream** steps of the industrial process.

On this site, various departments prepare the **kits** sent to the production units.

These kits, identified by barcodes and using **RFID**, allow **real-time tracking** of production progress.

Thus, certain preparations and transformations are carried out on-site, such as **cutting**, **molding**, **gluing**, **banding**, etc.

Our **productions** are carried out in our **own production units** or in dedicated **manufacturer** according to our organization and defined procedures. A team of technicians continuously visits the production sites.

**+1.000**  
Total Workforce

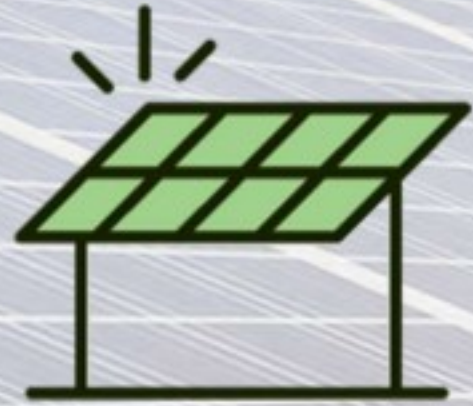
**2.000**  
Total Machines

**+13.000** pcs/day  
Production capacity





# Go Green



## SOLAR ENERGY PLANT

369 MWh/year RENEWAL ENERGY CAN BE USED

**100%** OF GLOBAL ENERGY NEEDS COVERED



## LIGHTING

**100%** USE OF ENERGY SAVING LIGHT BULBS



## TREE PLANTATIONS

ALL AROUND PLANT FACILITY



## SELECTIVE SORTING

WITH A CONTINUAL WASTE REDUCTION APPROACH



## LOW WASTE VALUE CHAIN POLITIC

USE OF REUSABLE CONTAINERS



## CHEMICAL POLITIC

**0%** USE OF HAZARD OR TOXIC CHEMICAL

# ISA GROUP CERTIFICATIONS



# ISA GROUP REFERENCES

PRINCESSE  
tam • tam  
PARIS



icone  
LINGERIE



huit 8  
PARIS

dora  
larsen

mey' / 19  
28

ORY  
SINCE 1.964

*Agent  
Provocateur*

SP  
SIMONE  
PÉRÈLE  
PARIS

MAISON LEJABY  
PARIS

LOU  
PARIS



Contact US:

Phone : +216 74 688 582

Mail : [contact@lesateliersisa.com](mailto:contact@lesateliersisa.com)



• ateliers  
ISA ايزا

Gabes road km 9  
Industrial zone Thyna  
Sfax - Tunisia

[www.lesateliersisa.com](http://www.lesateliersisa.com)